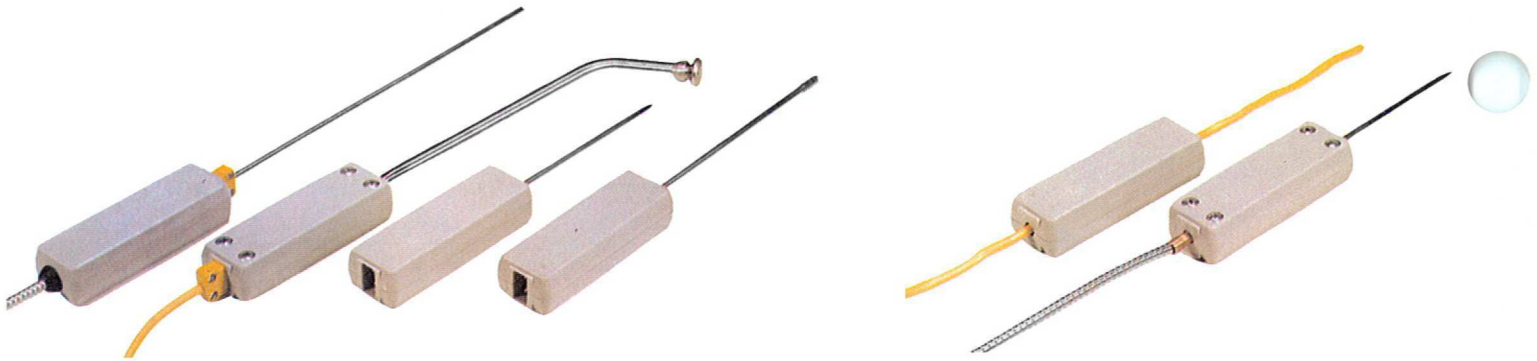


NOTICE:

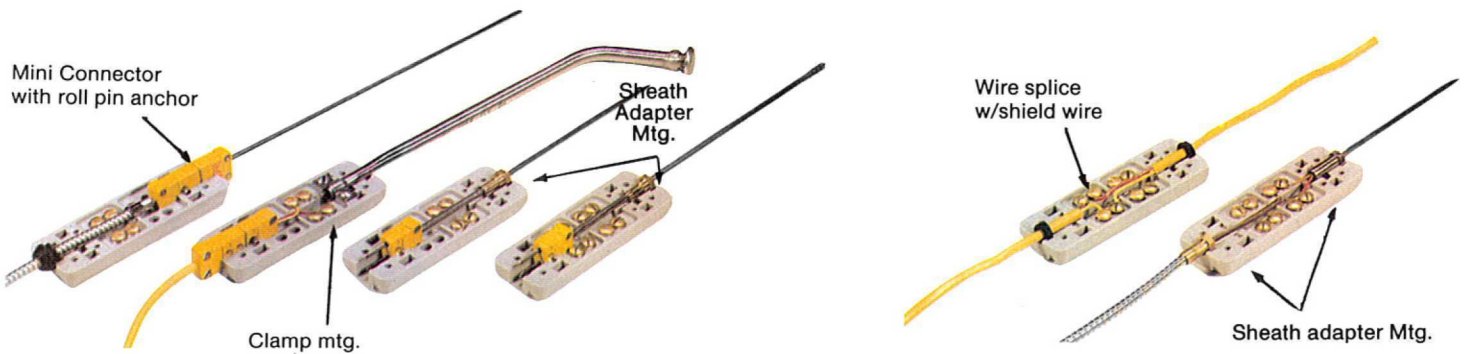
Prices and availability are subject to change without notice.

Please contact Marlin Manufacturing before ordering for updated pricing.

CONNECTORS UNIVERSAL PROBE HANDLE



TYPICAL PROBE HANDLE CONFIGURATION



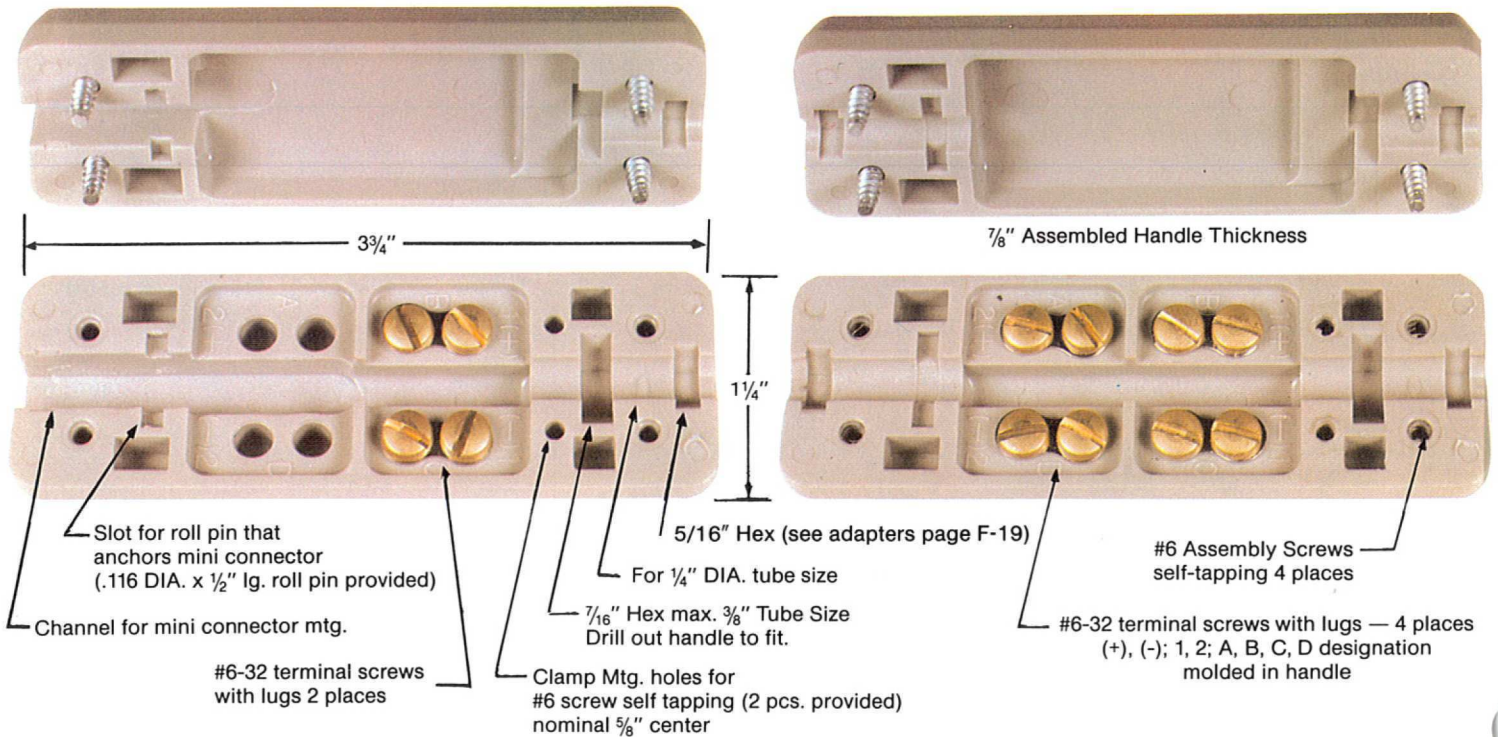
TYPICAL PROBE HANDLE HOOK-UP

This universal probe handle has been designed to accommodate a variety of mounting arrangements. Mini connectors, hex sheath adapters and rigid clamping provide dependable probe assemblies that properly strain-relieves

both the sheath and the wire. Molded of reinforced nylon the handle can be used to temperatures of 260°F (127°C) (not available in high-temperature).

FOR MINI CONNECTORS

FOR DIRECT WIRES



Part Number	Price	Disc. Sched.
UPH-1	\$7.50	A

Part Number	Price	Disc. Sched.
UPH-2	\$7.50	A



MANUFACTURING CORPORATION 12404 TRISKETT ROAD CLEVELAND, OHIO 44111 FAX: (216) 941-6207

(216) 941-6200